



VILLAGE PARK INN

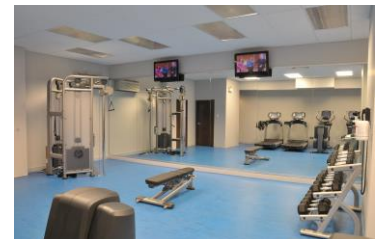


2016 Calgary Women's Spring Hockey Tournament

- Date:** April 8-10, 2016
- Rate:** \$139.00 + taxes – rate is based on single/double occupancy, each additional person over 2 is charged
\$10.00
- Breakfast** Hot buffet Breakfast included
- Taxes:** 5% GST, 4% Room Tax, 3% Destination Marketing Fee
- Guestrooms:** Standard Double Queen (2 queen beds)
- Reservation Procedure:** Individuals shall make reservation directly with the Hotel at **403-289-0241** on an individual basis, using the rate code “2016 Calgary Womens Spring Hockey Tournament”; please be prepared to give a credit card number to guarantee your arrival.
- Team Reservation:** Bookings for more than 5 rooms should be made through our Sales Team. Please contact **Angela Zhou** at (403)220-1809 or email info@villageparkinn.com.
- Cut-off Date:** All rooms must be booked by **Friday February 26th, 2016**. Rooms will be released back into the hotel inventory for resale after the cut-off date and the preferred rate will not be guaranteed after this date.
- Check-In:** 3:00 pm - early check-in may be requested but cannot be guaranteed.
Check-Out: 11:00 am
- Payment:** Room & tax and incidentals incurred during the stay will be paid upon check out time.
- Cancellation Policy:** Group Cancellation: 45 days prior
Individual Cancellation: up to 10% of the group may cancel 45-7days prior to arrival. Any additional cancellation will incur a charge equivalent to 1 night
Departure date must be confirmed upon check-in to avoid early departure penalties
- Guestrooms Amenities:** Complimentary high speed wireless internet, fridge, microwave, in-room safe, coffee maker with coffee & tea, iron & ironing board, hair dryer and bathroom amenities, 2 hot buffet breakfast included
- Facilities:** Indoor pool, whirl pool, surface and underground heated parking available, 24 hours business centre, 9100 square feet of meeting/ banquet facilities, onsite restaurant & lounge.
- Meals:** Team meal menus are available on request – please contact **Pallavi Mayne** at 403-220-1804 or email catering@villageparkinn.com for all meal inquiries
- SPECIAL NOTES:** Pool hours are opened from 8:30 am to 10 pm – Adult swim ONLY between 9 pm to 10 pm
Mini sticks are NOT permitted anywhere in the hotel

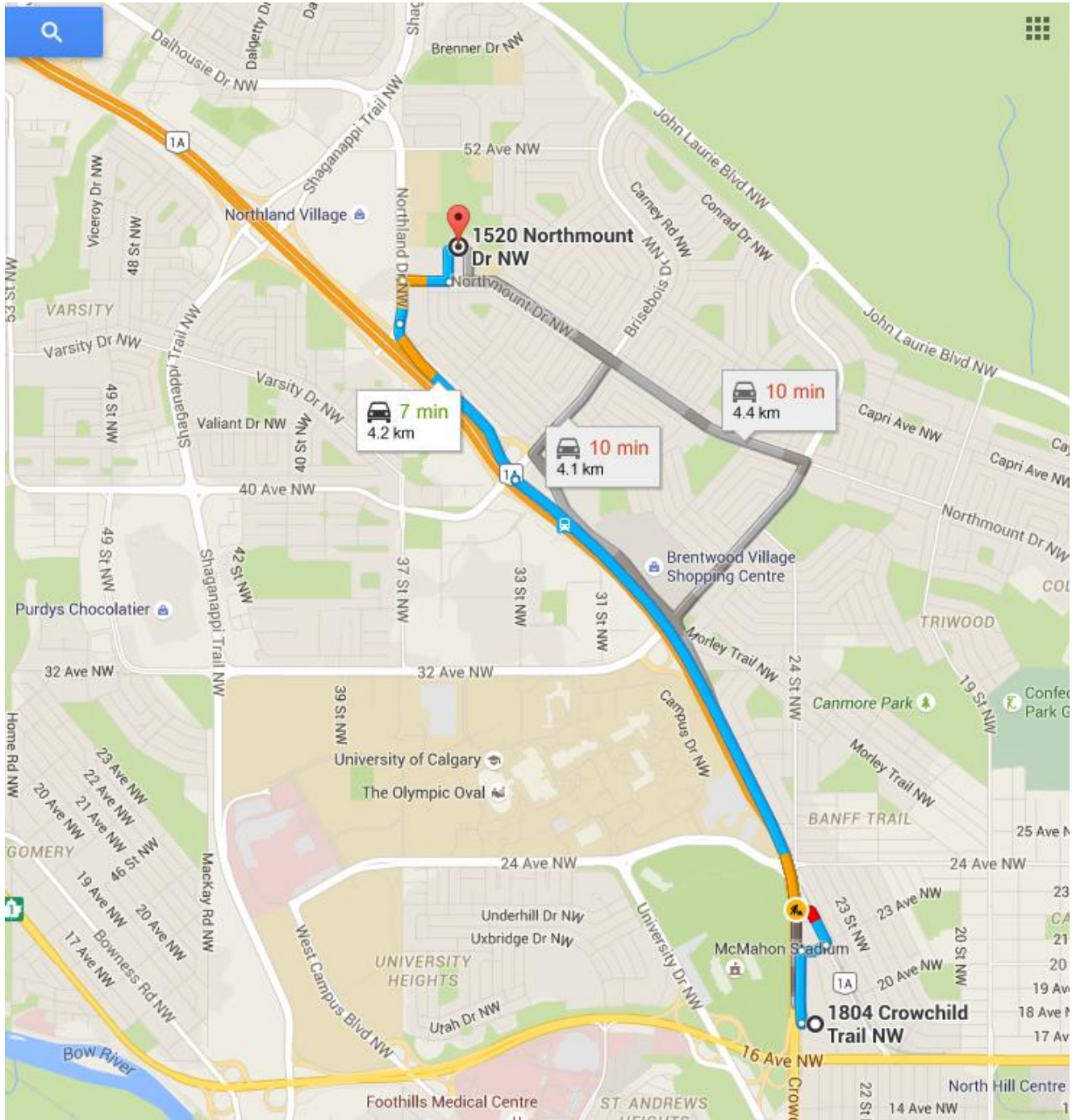


Best Western Village Park Inn
1804 Crowchild Trail NW
Calgary, Alberta T2M 3Y7
(T) 403-289-0241 (F) 403-289-4645
www.villageparkinn.com





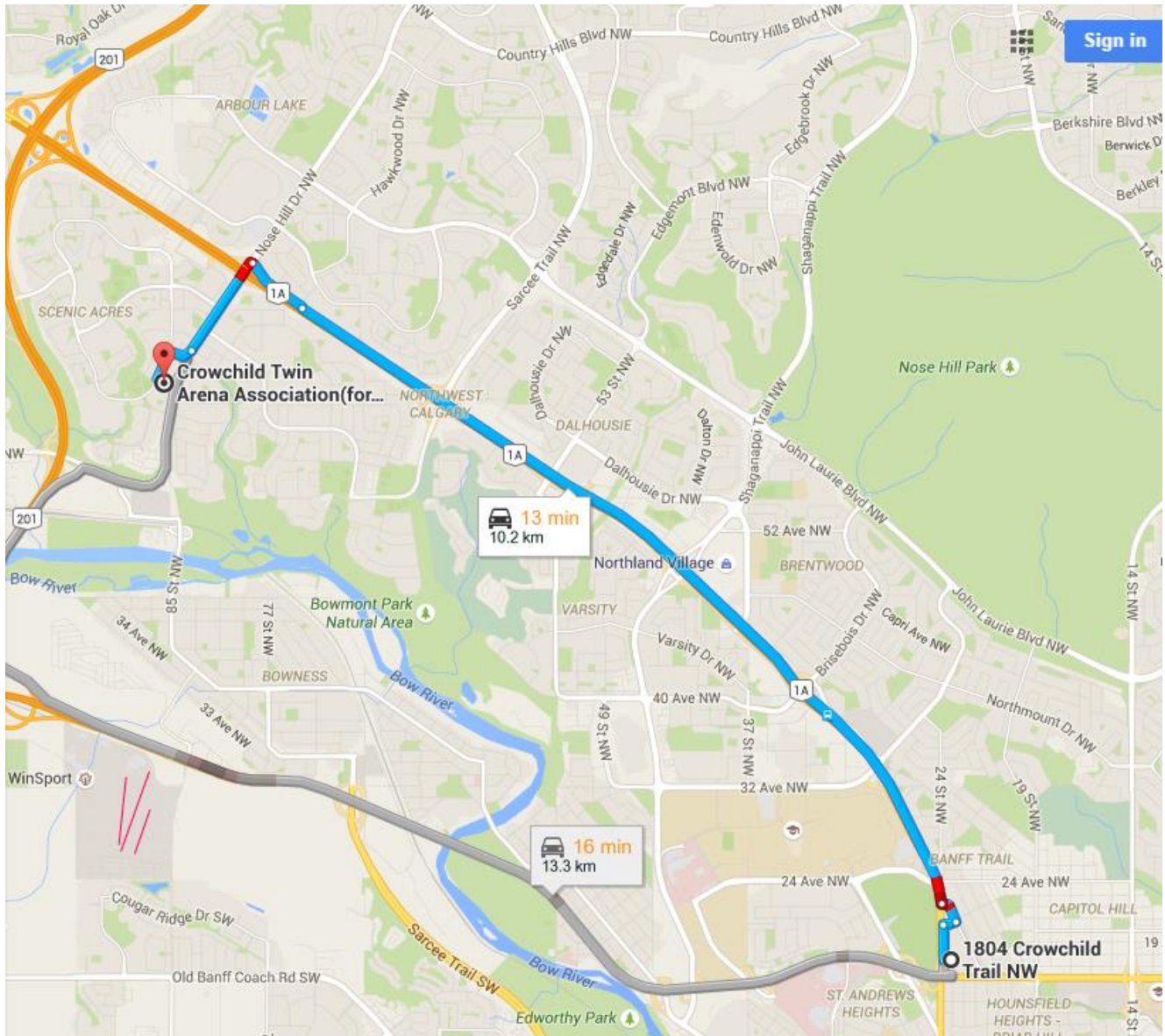
VILLAGE PARK INN



Best Western Village Park Inn
1804 Crowchild Trail NW
Calgary, Alberta T2M 3Y7
(T) 403-289-0241 (F) 403-289-4645
www.villageparkinn.com



VILLAGE PARK INN



Best Western Village Park Inn
1804 Crowchild Trail NW
Calgary, Alberta T2M 3Y7
(T) 403-289-0241 (F) 403-289-4645
www.villageparkinn.com